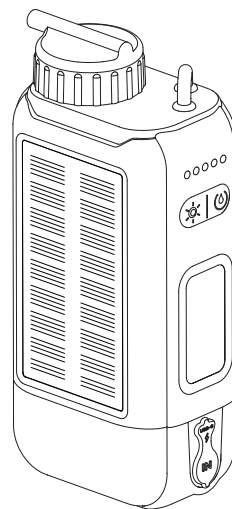




# OUTDOOR ELECTRIC WATER PURIFIER

## User Manual






Please read this user manual carefully before use.


# 1 SAFETY TIPS

Failure to adhere to these safety precautions may result in burns, injuries, leakage, overheating, ignition, rupture, or electric shock.

## ! WARNING

	Do not disassemble, repair, or modify the device. • It may result in fire or electric shock.
	Do not immerse in water, expose to moisture, or wash the device. Do not use the device when wet. If the device becomes wet, promptly wipe it dry with a soft, dry cloth. • It may cause electric shock or malfunction.
	Do not allow children to use the device. Also, do not use or store the device within reach of children. • It may cause electric shock or injuries.

## OPERATING PRECAUTIONS

	When purifying water, always attach an external filter before use.
	Ensure that the water purification cartridge is used in combination with products designated by our company.
	Do not pass water hotter than 104°F(40°C) through the water purification cartridge.
	To maintain battery life, do not leave the battery un-charged for extended periods. Please fully charge the battery at least once every six months.

# 2 SPECIFICATION

Model	E01
Input Power	DC5V,2.5A
Battery Capacity	5200mAh,3.7V
Fully charged work time	4-5 hours
Charging port	Type-C
Filter Accuracy	0.01um
Main Filter Type	Ahlstrom Disruptor® +carbon
Main filter filtration capacity	800L(~210 USGallon)
Pre-filter type	UF+PE filter mesh
Prefilter filtration capacity	1000/800L(~264/210 US Gallon)
Purified water flow	700ml/M
Levels of filtration	4
Main unit net weight	4409
Main unit dimension	180*82*60mm
Working temperature	-4°F-104°F
Water proof level	IPX5/6
Filter Cartridge Certification	CE/ROHS/FCC/SGS

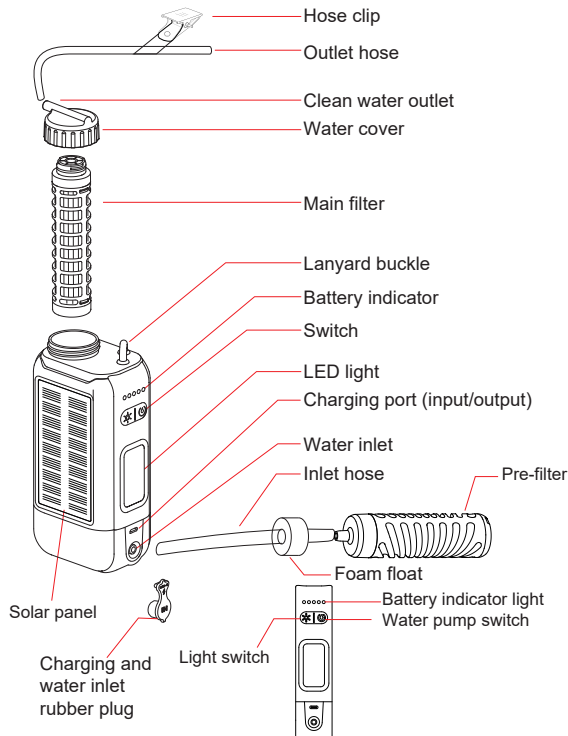
Note:

- 1) There will be differences according to the source water quality.
- 2) Once used, it is recommended to replace the filter element every 180 days.

# 3 Package included

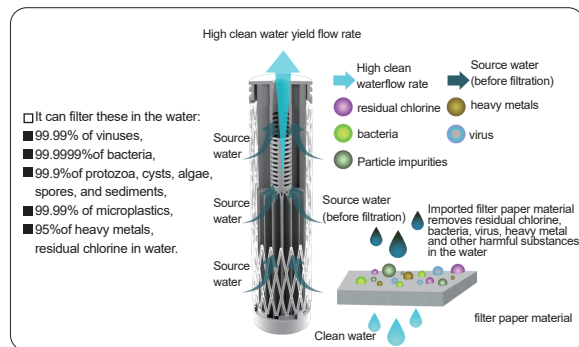
1 * NA01 Water Purifier (Internal Filter Cartridge included)	1 * Inlet Hose(black)	1* Lanyard
1 * Pre-filter Cartridge	1 * Outlet Hose(transparent)	1 * User Manual
1 * Type_C Charging Cable	1* Hose clip	

## 4 INTRODUCTION OF STRUCTURE



## 5 Ahlstrom Disruptor® Filter Principle Introduction

- This electric water filter ( E01 model ) uses Ahlstrom Disruptor® filter paper material as the main filter element, which originates from the United States.
- Disruptor® filter material is a new technology, an alternative to membranes. Disruptor® can effectively remove various harmful pollutants (sub-micron particles, organic acids, viruses, bacteria, cysts, cellular debris, and trace drugs) from water, making the drinking water safer.
- Disruptor® has an open filter material structure, making it suitable for a wide range of end-use applications. It can be used in both pressurized water systems and gravity-fed applications. In addition to its excellent pathogen removal performance, these products also have special functions such as dechlorination, heat sealing, and antibacterial treatment to prevent bacterial accumulation. This product can also remove selected trace metals within a given pH range.



## Why choose Ahlstrom Disruptor®

- Performance — Compared with other technologies such as ultrafiltration (UF) hollow fibers, carbon blocks, granular filters, and UV technology, Disruptor® can remove more pathogens and pollutants, such as bacteria /legionella, viruses, cysts, endotoxins, polysaccharides, colloids, trace drugs, etc. In addition to pathogens, it can also remove fine particles. At a challenge concentration of 1E5-1E6 CFUs/mL, facing a capacity of over 2000 liters/square meter, we can still achieve an LRV value of Log 6 unit level for removing Escherichia coli, which is equivalent to removing more than 500,000,000,000 CFUs of Escherichia coli per square meter.
- Energy Efficiency and Sustainability — Compared with competing technologies with similar biological removal performance, Disruptor® can provide ultra-high flux rates at lower pressure drops.
- Product Safety and Taste — Disruptor® can effectively remove pathogens and other contaminants while maintaining the taste of minerals in the water. Unlike RO systems, it does not produce wastewater in treating "salts in the water" (Dissolved Inorganic Salts, Heavy Metal Ions, other Total Dissolved Solids (TDS), etc). Compared with UF/hollow fibers, Disruptor® is not prone to clogging, and even if not used for several days, the filter can still remain odorless. All Disruptor® product grades comply with NSF/ANSI 42 applicable drinking water standards.

## 6 Related Certifications



This electric water filter has undergone rigorous testing and meets SGS standards. It has also obtained FCC and UL certifications. The main filter's Ahlstrom filter paper material has passed the NSF certification in the United States.

## 7 Please read before use

- ① When used with unclean water sources, a pre-filter must be installed to prevent impurities from entering the electric water pump and damaging the motor.
- ② This product is only protected against splashing water (IPX5/6 rating). If it is accidentally dropped into water, immediately wipe it dry with a towel and use only after air-dried.
- ③ When the electric pump has not been used for a long time or has frozen due to cold weather, and if the water can still be produced normally, the internal parts of the electric pump should be moistened by the following two methods:

### ◆ Method 1:

First, remove the rubber plug covering the charging and water inlet, and place it inside the carrying pouch. Then connect a full tube of clean water (free of visible particles or impurities) to the inlet hose, attach one end of the hose to the water inlet and hold the other end upright. Once the water enters the electric pump, the device will be ready for normal use.

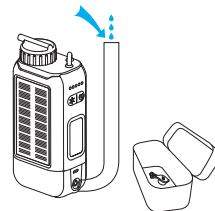


Figure 1

### ◆ Method 2:

Remove the main filter cartridge, fill the cavity with clean water (without visible particle impurities) (add carefully to prevent water overflow), and install the main filter back in place for normal use (when the ambient temperature is below 10°C, the first solution should be used).



Figure 2

# 8 Usage Instructions

## 1. Pipeline Connection

- ① Connect the pre-filter: Insert one end of the inlet pipe into the outlet of the pre-filter, and insert the other end into the inlet of the main machine until it is securely connected.
- ② Outlet connection: Press one end of the outlet pipe into the clean water outlet, insert the other end into the water receiving container, use a clip to fix the outlet pipe to the water receiving container.
- ③ Check whether the built-in main filter is properly installed. If it is not properly installed, please install it before use.

## 2. Water Source Selection

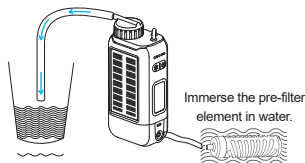
Please prioritize stream water and mountain spring water as sources

### ⚠ CAUTION

- ◆ Stagnant water is not recommended. The use of industrially polluted water sources, brackish water, or seawater is strictly prohibited.
- ◆ Water quality directly affects the life span of filter cartridge. The worse the water quality, the shorter the life span of the filter cartridge.

## 3. Placement and Water Intake

Place the pre-filter into the water source to be purified, and adjust the length of the inlet pipe so that the pre-filter is submerged in the water.





sea water



polluted water

## 4. Producing clean water

Press  the water pump switch, The water pump starts working. It will evacuate the air first (approximately 5-10 seconds), and then the filtered water will flow out from the outlet pipe; press  again to turn off the clean water making.

### ⚠ CAUTION

- ◆ If the water pump does not suck in water, the pump sound becomes louder, which is normal;
- ◆ If the air cannot be properly expelled, please unscrew the main filter cover and press the power button.
- ◆ When water overflows from the main filter cartridge, then tighten the cartridge


### ⚠ CAUTION

- ◆ When using the device for the first time, discard the first 2-3 liters of filtered water (which takes about 5 minutes to filter) to remove any potential residual impurities from the inside.
- ◆ If you have not used the product for more than a week, it is recommended to discard the first approximately 1 liter of water (about 2 minutes) before use. This helps clean the inside of the filter.
- ◆ Treat filtered water as you would perishable items and use it within one day.

## 5. After Use

Before storing the water purifier, please pump out any remaining water from the pump and backwash the pre-filter element (refer to "Pre-filter Backwashing Method" for detailed instructions). Then, securely close the rubber plug on the water inlet to prevent any debris from entering

## 6. Turn On/Off Emergency Light

Press  the button once to turn on the low-light lighting; press the second time to turn on the high-light lighting; press the third time to turn on the light SOS function; the fourth time to turn off the light, press and hold to turn off the light when any of the above three functions are turned on.



# 9 Charging Instructions

This machine is equipped with a 5200mAh rechargeable lithium battery and a Type-C charging cable. For first-time use, remove the rubber plug covering the charging and water inlet, and place it inside the carrying pouch. Then connect the power supply and charge continuously for over 5 hours to ensure the battery indicator shows a full charge.



Fig. 1:  
Remove the rubber plug

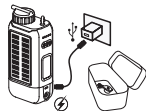


Fig. 2:  
Forward Charging



Fig. 3:  
Reverse Charging

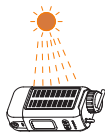


Fig. 4:  
Solar charging

- ① After a full charge, the machine can be used directly. When the battery indicator light drops to the last segment, please charge it in time.
- ② Please use the Type-C charging cable when charging is necessary. It can be connected to a 5V charger, laptop, power bank, or other Type-C output devices. The charging indicator light will flash during charging, and once fully charged, it will stop flashing and remain lit.
- ③ In emergency situations, you can use the attached Type-C charging cable to supply power from this electric filter's battery to your smartphone. Simply connect one end of the charging cable to your phone and insert the other end into the filter's Type-C charging port.
- ④ This product has only one Type-C input/output port. When charging the machine, it serves as an input port, and when reversing to charge a phone, it automatically becomes an output port.
- ⑤ Please note that the fully charged battery can support the machine for approximately 4-5 hours of water filtration function accumulated. Please pay attention to the allocation of your machines battery usage (filtration, emergency light, reverse charging, etc.).

## ⚠ CAUTION

- ◆ Please use the correct charging head for charging.
- ◆ Please fully charge the machine once every six months if not used.
- ◆ After use, please promptly and securely close the rubber plug covering the charging and water inlet.

# 10 Pre-filter Backwashing Method

When the water purifier is not in use and before storage, it is recommended to backwash the pre-filter cartridge.

## Method: Reverse Water Flow

Before storing the water purifier, pump out the remaining water and backwash the pre-filter.

- ① Remove the pre-filter cartridge from the hose;
- ② Use clean water as the water source, first pump out all the air in the water purifier; (If the air in the water purifier is not pumped out first, the pre-filter element may detach from the hose.)
- ③ Connect the pre-filter cartridge to the water outlet hose and pump water again. At this time, the dirty water will flow out from the pre-filter cartridge until the flow out water is completely clear, which means the completion of back flushing process (shaking the pre-filter cartridge during the back flushing process can make the cleaning more thorough)

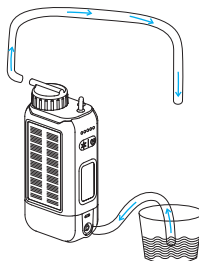


Figure 1

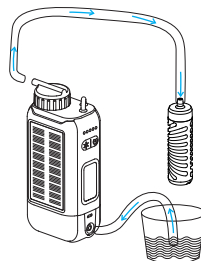


Figure 2

# 11 Water Purifier Maintenance

- ① Detach and remove the main filter and pre-filter cartridges.
- ② Backwash the built-in main filter and pre-filter cartridges (refer to the previous page).
- ③ Do not remove the ABS shell from the entire filter element; simply rinse it with clean water.
- ④ Store all filters and the electric water filter outer shell in a dry and ventilated environment to dry. Then, wrap the filter cartridges in clean plastic bags and store them. Storing the filters in a refrigerator can extend their lifespan. (Due to structural reasons, the main filter element usually needs to be placed in a dry environment for 1-2 months to completely dry out).

Take out the main filter cartridge

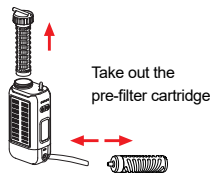


Figure 1: Remove Filter Elements

Flush repeatedly the filters



Figure 2: Rinse Filter Elements

# 12 Filter Element Installation and Replacement

## ① Method for Replacing the Pre-filter cartridge

- (1) When the filter surface inside the pores of the pre-filter cartridge turns yellow or black, or the water output significantly decreases and does not improve after backwashing, please replace it.
- (2) Replace after 180 days use or when the filtered water output reaches 1000L.
- (3) Also depends on the quality of the source water.
- (4) Simply unplug the original pre-filter from the hose and connect a new one.

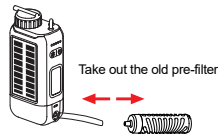


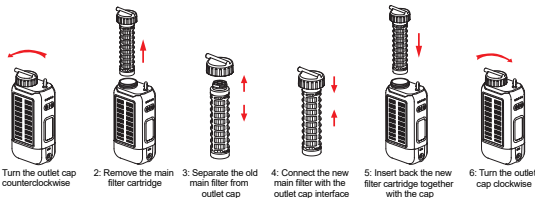
Figure 1: Removing the Old Pre-filter



Figure 2: Installing the New Pre-filter

## ② Method for Replacing the Built-in Main Filter Cartridge

- (1) Replace after 180 days use or when the filtered water output reaches 800L.
- (2) Also depends on the quality of the source water.
- (3) Unplug the outlet hose, rotate the filter cap counterclockwise, pull out the main filter from the cavity, and remove the main filter from the outlet cap interface. Insert the new built-in main filter.
- (4) Insert the new built-in main filter back into the cavity, tighten the main filter cap clockwise, and complete the replacement of the built-in main filter.



1: Turn the outlet cap counterclockwise  
2: Remove the main filter cartridge  
3: Separate the old main filter from outlet cap  
4: Connect the new main filter with the outlet cap interface  
5: Insert back the new filter cartridge together with the cap  
6: Turn the outlet cap clockwise

### ⚠ CAUTION

- ◆ It is strictly prohibited to dry the filter cartridges in the sun or with fire; avoid using boiling water to clean the filter cartridges; do not freeze the pre-filter cartridge to prevent membrane rupture.
- ◆ When storing the filter in a dry environment, be sure to remove the rubber plug from the water inlet and place it inside the carrying pouch. This allows air to circulate between the inlet and outlet, accelerating the internal drying of the filter.

# 13 The Frequently Problems to Solve

Malfunction	Reasons	Solution
The flow rate of the effluent becomes smaller	Excessive air accumulation inside the water purifier	Take out the built-in main filter cartridge and remove the air
	The water quality of the water source is poor, and the Pre-filter is blocked	Try to reverse flush the pre-filte cartridge and choose a clean source water
	Long use time, resulting in clogging of the intemal main filter cartridge	Replace the main filter cartridge
The machine does not produce clean water	Battery is too low	Charge the product
	The filters has been used for too long	Replace the filter cartridge
The water tastes bad	Poor source water quality	Replace the filter cartridge and re-select the source water
	The machine has been used for too long	Replace the filter cartridge
No response to keystrokes	Battery is too low	Charge the product
	System protection	Charge the product
No charging	The charging cable's connector is not fully inserted	Check the connection method of the charging cable
	The connection orientation is incorrect	

If there is any problem except those or the problem not solved, we feel sorry for the inconvenience caused. Please feel free to contact us.

## Customer Care

Please prepare to provide your online order information that we can support you timely.